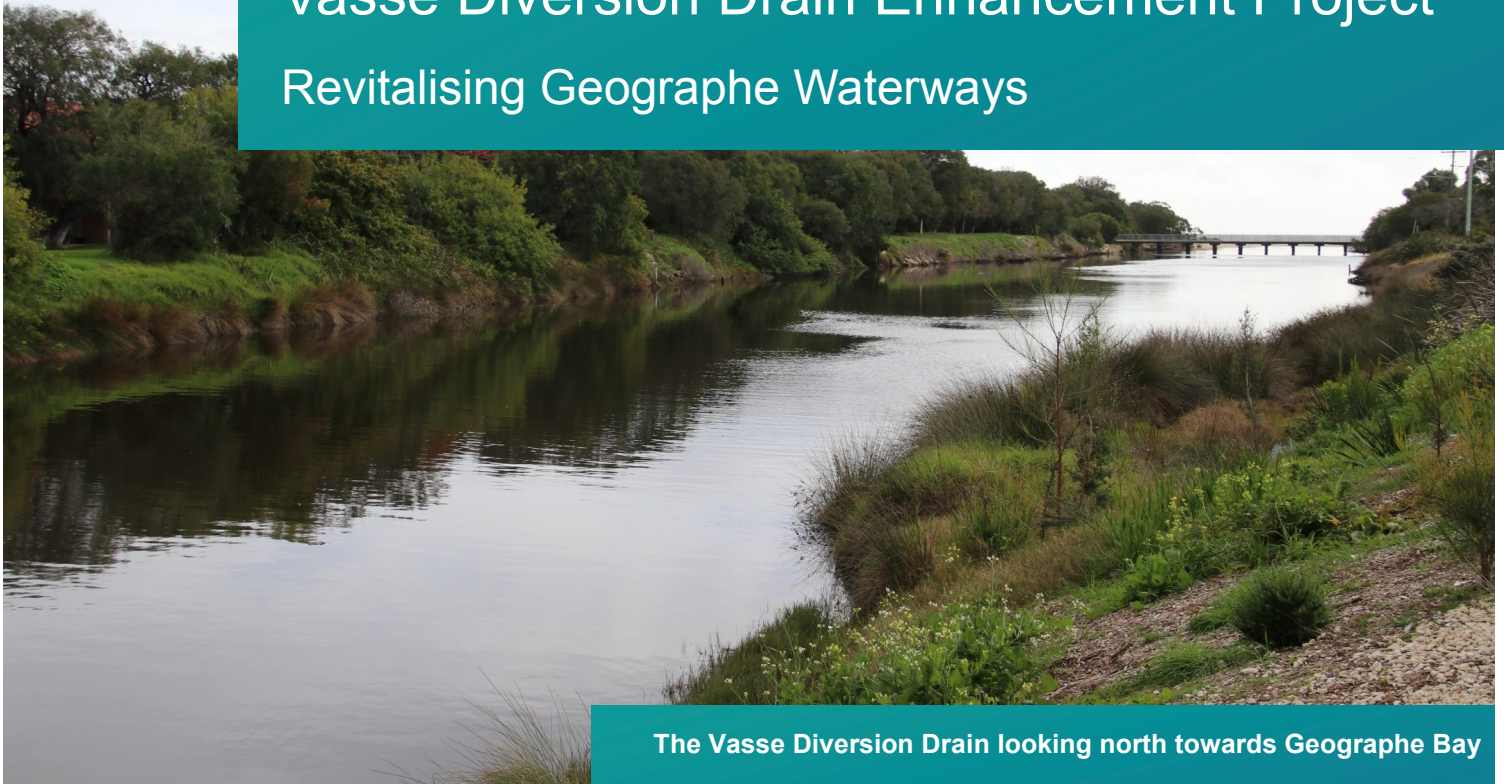


Vasse Diversion Drain Enhancement Project

Revitalising Geographe Waterways



The Vasse Diversion Drain looking north towards Geographe Bay

GeoCatch will soon be starting a project to revitalise and revegetate the lower section of the Vasse Diversion Drain near the Bussell Highway traffic bridge.

The majority of works will begin in mid-September and be completed by mid-December 2018. Following this a Bay OK waterwise garden will be established in April 2019. Disturbance to neighbours is expected to be minimal and work will be undertaken during normal working hours. Fencing will be erected to manage public access to the banks of the drain while works are taking place and signage will be installed to explain the project.

What work will take place?

Stage 1 works will focus on the area near the Bussell Highway Bridge downstream to the footbridge near the ocean and will provide a high profile demonstration to showcase best practice drainage management in an urban setting. Work will include:

- Removing weeds and stabilising the banks
- Controlling erosion
- Removing wooden baffle boards
- Revegetation on the banks of the drain
- Building a viewing platform and footpath near the footbridge
- A landscaped picnic area, gravel carpark and Bay OK waterwise garden at the old Water Corporation depot site.

A Concept Design has also been created for potential Stage 2 works over the section of the drain from Bussell Highway to the College Avenue roundabout. The Concept Design is an important step in realising the long term community vision for the drain.



Location of the future upgraded carpark and Bay OK waterwise garden

Why is the work being undertaken?

Currently the Vasse Diversion Drain in this section is suffering from erosion issues, weed invasion and is at risk of further degradation. This section of drain flows through a highly urbanised area including schools, housing, apartments and a caravan park and the public open space adjacent to the drain is regularly used for recreational activities such as exercising, dog walking and fishing.

Although the primary function of the Vasse Diversion Drain is flood protection, this project is enhancing the drain so it contributes positively to the local area through aesthetics and enhancement of open space.



Bank erosion on the Vasse Diversion Drain will be controlled as part of the project

The project will help to address community concerns by improving the liveability, visual amenity and habitat value of the lower section of the drain.

What will be the benefits of the project to the community?

The project has been designed to allow the community to view open water within the waterway and long views out over the ocean. This will be achieved through a combination of low understorey plants and careful placement and ongoing management of trees and shrubs along the banks. A viewing platform will be built near the footbridge as well a landscaped picnic area adjacent to the site.

The project will use local native plants to create habitat value for wildlife and a local sense of place for the community. A mix of species to create various points of interest and seasonal change will be used.



Vasse Diversion Drain Concept Design

How has the local community been involved and informed in the project?

In 2017 GeoCatch partnered with Busselton Senior High School to conduct a survey of local residents and community to help develop the project design. The survey identified that the public open space around the drain was commonly used for leisure activities such as walking, dog walking, bike riding and fishing. The survey also identified concerns with the drain including visual amenity, the safety and stability of the banks, lack of native vegetation and poor water quality. The outcomes of this survey were used to develop the Concept Design, a long-term masterplan for enhancing the drain.



Who is managing the project?

This project is part of the state government funded Revitalising Geographe Waterways program. GeoCatch is leading this project in partnership with the Water Corporation and City of Busselton. A Project Reference Group oversees the work made up of the following partners:

- GeoCatch (funding agency and project principal);
- Department of Water and Environmental Regulation (manager of the Revitalising Geographe Waterways Program);
- Water Corporation (funding partner, drain asset manager and technical support);

- City of Busselton (funding partner and asset manager for land surrounding drain);
- Busselton Senior High School (technical support and on ground assistance).

Other key stakeholders who have been informed or consulted include:

- Busselton Villas & Caravan Park
- Local residents
- Local Busselton community
- IGA shopping centre

What is the Revitalising Geographe Waterways program?

The Vasse Diversion Drain Enhancement Project is one of 30 projects being delivered under the Revitalising Geographe Waterways program. The Revitalising Geographe Waterways program is a four year, \$15 million initiative that aims to improve water quality, waterway health and management of Geographe waterways. The initiative provides a framework for best-practice water quality and waterways management based on sound science and community input and is delivering extensive on ground works to reduce nutrients loads. The Initiative is overseen by the Vasse Taskforce and is funded through the State Government and Vasse Taskforce partner contributions.



How can I get more information on this project?

For further information on this project please contact GeoCatch on 9781 0111 or visit the project website at www.rgw.dwer.wa.gov.au



More information available at:
www.rgw.dwer.wa.gov.au
Email: geocatch@dwer.wa.gov.au
Telephone: 9781 0111

Revitalising Geographe
Waterways

VASSE
taskFORCE